
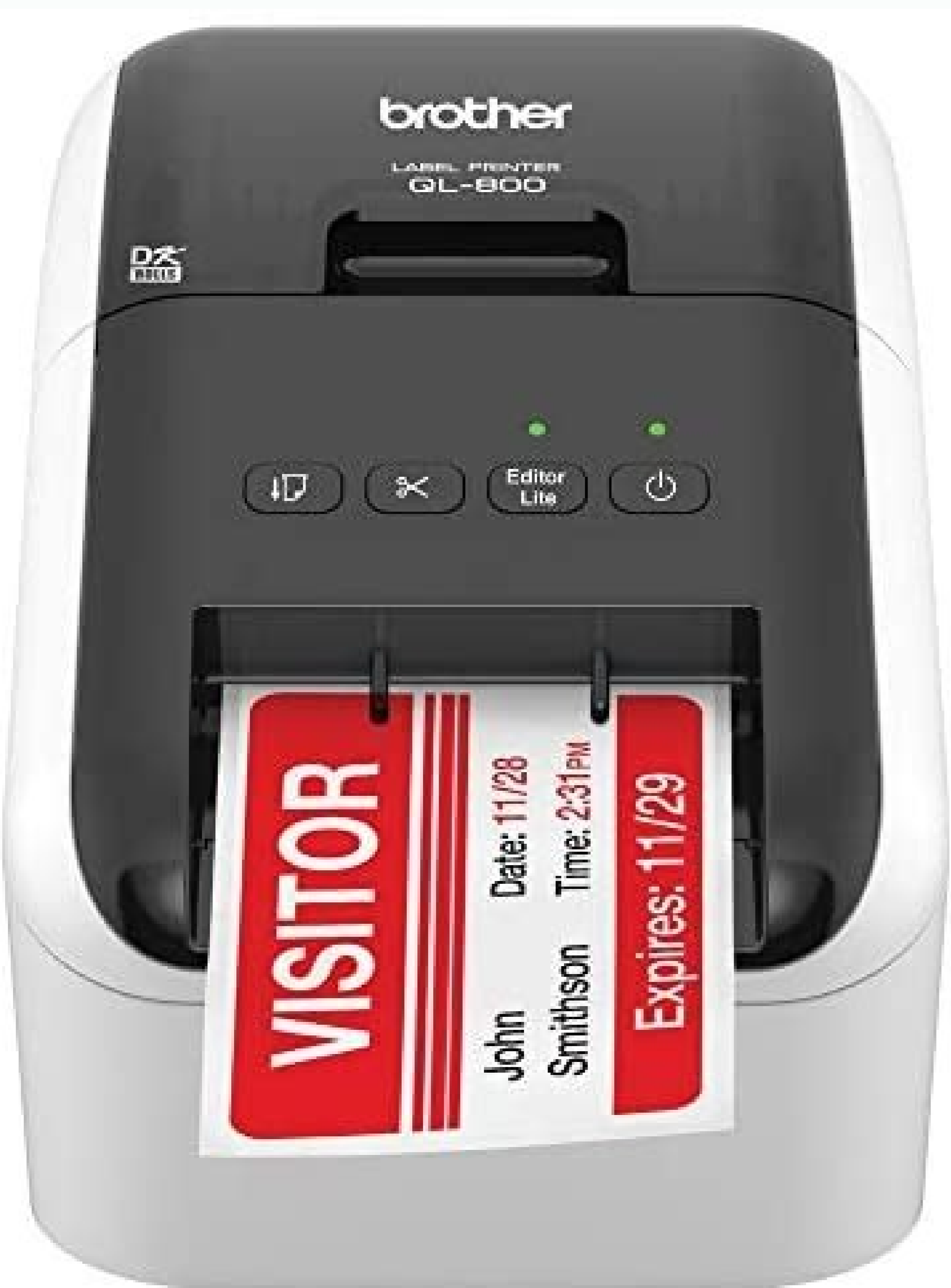
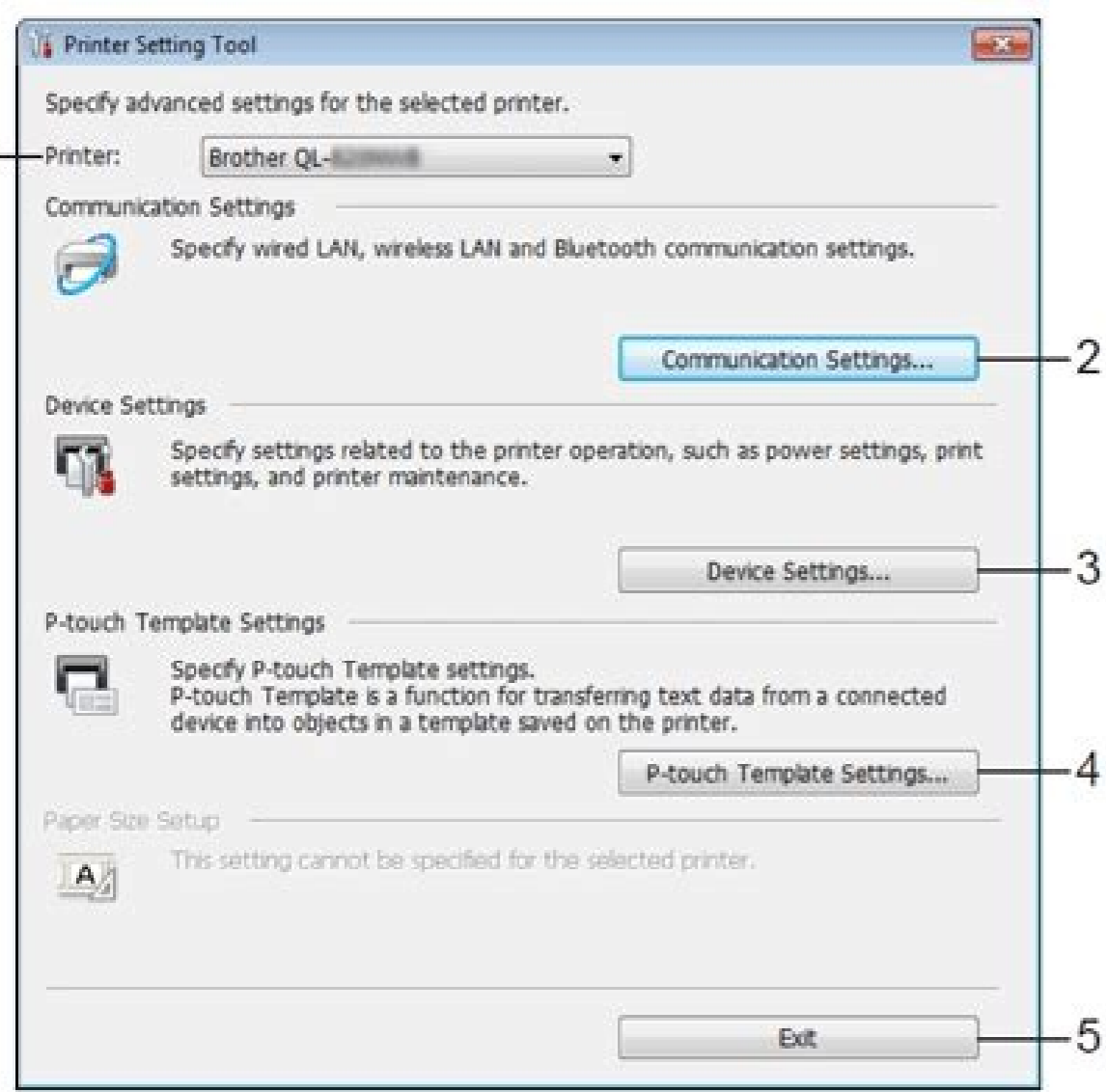


I'm not robot  reCAPTCHA

Continue

Brother label printer ql- 820nwb manual



Brother label printer ql-720nw not printing. Brother label printer ql-700 how to use. Brother label maker setup. Brother label printer ql-820nwb manual. Brother label printer ql-820nwb setup. Brother label printer ql-820nwb not printing.

Documents: go download! User Manual User Manual - (Italian) Other Documents Setup Quick Guide - (English) User Guide (Bradmin Professional 4) - (English) Product Safety Guide - (English) Open Source Licensing Comments - (English) Air GUIDE - (English) Raster Command Reference - (English) Printer Printer User Guide Brother Model Guide QL-820NWB) Table of Contents section The basic operations Description Description Description Description Frontload/download Rate the DK Rollincing adapter/antang to adapterator Coin cell battery (QL-820NWB only) (QL-820NWB only) Setting the time and date (QL-820NWB only) LCD (QL-820NWB only) ScreenLCD SettingsPrinting using a computer (P-Touch Editor) Installing the Software and printer driver on a Computerconnecting label printer on a computer company using USBConnecting using Wi-Ficonnecting using A wired LAN (QL-820NWB only) Bluetooth connection (QL-820NWB only) Connecting the printer for labels to a barcode scanner using Bluetooth (QL-820NWB only) Print by a Computerableable ApplicationScreening Labels from your labeltaching labels using the Applications of mobile devices for use with mobile devices available for use of the label printer on a mobile device from a mobile device to print templates created on a computer-catching labelschanging for printer settings For computers. Before using printer setting printer setting tool Printer setting tool for WindowCommunication settings for WindowSettings dialogue window Dialogmenu Bargeneral TabinStalling software drivers e Printer on a computer 2 To print from the Windows or Mac computer, install the print drivers, the P-Touch editor and other computer applications. For Windows: printer driver, P-touch editor, P-Touch phonebook, software of P-Touch Update, Printer Setup Tool, Bradmin Light and Bradmin ProfessionalFor PAC. Printer Printer P-touch Editor, P-Touch update software, printer setting tool and wireless device configuration WizardimPortQL-810W only: When printing with P-Touch editor, press and hold the P-Touch Editor Lite button up to When the Green Editor Lite goes off. When replacing a badge roll, save for the next roll. Make sure the green status light comes on. Use the [A] e [A], [A] e [A/4] and [OK] buttons to set the language, time and date as required. Setupethernet Wi-Fi SetupBluetooth SetUpquesto Contour Item How to match and manage the printer. Press [OK]. Use the [A] e [A] and [A] e [A/4] buttons to select Bluetooth> Automatic reconnection> On in the Settings menu. A visit our website (install.brother) and download the software installer for the latest software newest programmer: RJ-3150 HL-4570CDW JS2135 XRS340 HL-5280DALSO, these documents are for other Brother models: QL-810WTAGS; Maintenance Manual Brother HL-4570CDW, Brother Printer Website, Brother CS7000i Manual, Brother LX3817A Manual, Brother LX3817A Manual, Brother Mobile Printer RJ, Brother Ptouch Label Maker, Brother Printage 2 Will this suggested for a beginner? I think this is a good car for a beginner who is not ready to spend a lot of money. It is a series of numbers separated by periods (for example 192.168.1.1). Step 3: Couples the printer with Envoyon your web dashboard. go to visitors> Devices> Printers. Select Brother QL-820NWB. Select Ethernet.Type your IP address in the field and click on A] e [A] ~ A "Save. It will be a series of numbers separated by periods (for example 192.168.1.44 or 10.1.168.1.44 or 10.0.1.23). Sostep 3: Couples the printer with Envoyon the computer, access the startup and go to visitors> Devices> Printers. Select Brother QL-820NWB. Select wi-fi.type Your IP address in the field and click A] e [A] ~ A "Save. *Step 4: Enable badge printing to visitors> Settings> Access flow. To learn more about the basics of device management, please read ours Device management article; For more information on which printers are supported, read our supported hardware guide. Wi-Fi Setupyou does not need the Brother's instruction book, just follow with these steps. 1: Unbox and configure the printerunbox printer. Badge. Remember, the printer and the iPad will be on the same network .nota: The Brother printer only supports connections to a 2.4 GHz wireless band. Otherwise, use a coin or similar object to adjust the cover in the locked position . Note: the battery must always be inserted (-) negative side. Assembly and insert the badge roll into the printer. Press [OK]. Use the [A] e [A] and [A] e [A/4] buttons to select the WLAN manual setting> Inva in the Settings menu. You should see the Bluetooth icon at the top right. 2: Couples the printer with iPadon your iPad, open the settings app. This sewing machine is really easy to touch even with clear numbering. Beginners should be careful to turn only the hand wheel on the side in the correct direction.page 3 Learn how to configure the Brother QL-820NWB. Make sure the green status light comes on. Use the [A], [A], [A], [A] and [OK] to set the language, time and date as requested. If you are not already on the main screen, navigate you now using the [A] e [A] button. Press the [MENU] key. Use the [A] e [A] and [A] e [A/4] buttons to select WLAN> WLAN (ON / OFF)> ON in the Settings menu. Make sure the coin cell battery cover is in the lock position. In other words, you will never have to worry about your IP address to get reset.ethernet Setupyou does not need the Brother instruction book, just follow with these steps. 1: unbox and configure the printerunbox your printer.insert badge. Find out more. Pull Thlwg The black power cable in the printer and a power outlet. Press the power button to turn on the printer. Using a static IP address will provide you with a continuous connectivity to the printer. Step 2: Find the IP address The [A] e [A] and [A] e [A/4] buttons to select Menu> Information> Print configuration> All> Start in the Settings menu. You can find the step-by-step photo instructions here. If you need to order badges, you can buy them from our store or buy the DK-1202 Brother DK-1202 model badges from your choice retailer. Note: The casing badges are equipped with a reusable black plastic frame. Discard the first six. If you use a double band router, iPads can stay connected to the 5 GHz band and the printer can connect to the 2.4 GHz band. Use the [A] e [A] and [A] e [A/4] buttons to select Your

desired network. Press OK.Provide your password .look at the top right of the screen. Assemble and insert the badge in the printer. Note: The battery must always be inserted (·) the side upwards. Note: If you have more types of visitors, you will configure the badge printing by type of visitor. Select the type of visitor you want to change. Select the badge from top navigation. Printing of the top badge in the position Å º º, ~ º º "OnÅ º º, ~ º º of the position. 5: PrintingTurn test on your iPad. Open the Envoy app and touch the Å º º, ~ º º "TAP button to sign the button. Open the and remove the insulating gasket from the coin cell battery. Press [OK]. Beside IP Addr, you will see the IP address. In my opinion, the characteristic that helps most is the fall of the coil for coil threading. After associating the iPad with the additional printer via You will combine the iPad at the dashboard and the printer will automatically be added and visible on the dashboard. Open the lid and remove the insulating gasket from the coin cell battery. Make sure the coin cell battery cover is in the lock position. Note: If you have more types of visitors, you will configure the badge printing by type of visitor. Select the type of visitor you want to change. Select the badge from top navigation. Printing of the top badge in the position Å º º, ~ º º "OnÅ º º, ~ º º of the position. 5: PrintingTurn test on your iPad.Open The Envoy App and touch the Å º º, ~ º º "TAP button to access Buttons.Note: if you have more types of visitors, choose a type of visitor who has a print of the Badge enabled. If a badge does not automatically print, please contact us. Find out more. PullLug The black power cable in the printer and a power outlet. Connect the Å º º

1

2

3

4

5

6

7

8

9

10

11

12

13

14

15

16

17

18

19

20

21

22

23

24

25

26

27

28

29

30

31

32

33

34

35

36

37

38

39

40

41

42

43

44

45

46

47

48

49

50

51

52

53

54

55

56

57

58

59

60

61

62

63

64

65

66

67

68

69

70

71

72

73

74

75

76

77

78

79

80

81

82

83

84

85

86

87

88

89

90

91

92

93

94

95

96

97

98

99

100

101

102

103

104

105

106

107

108

109

110

111

112

113

114

115

116

117

118

119

120

121

122

123

124

125

126

127

128

129

130

131

132

133

134

135

136

137

138

139

140

141

142

143

144

145

146

147

148

149

150

151

152

153

154

155

156

157

158

159

160

161

162

163

164

165

166

167

168

169

170

171

172

173

174

175

176

177

178

179

180

181

182

183

184

185

186

187

188

189

190

191

192

193

194

195

196

197

198

199

200

201

202

203

204

205

206

207

208

209

210

211

212

213

214

215

216

217

218

219

220

221

222

223

224

225

226

227

228

229

230

231

232

233

234

235

236

237

238

239

240

241

242

243

244

245

246